

ACW DUINO

UART ◦ ADAPTER ◦ FLEXIBLE ◦ ARDUINO

THE ACW DUINO

is a product that has been designed to send data over long distances from ARDUINO based devices with a low power consumption and using a large variety of radio technologies :



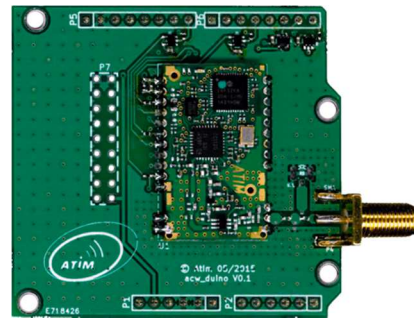
Sigfox™



LoRaWan®



Local Modbus



Flexibility: Several operating modes are available from 'AT' commands / settings via UART : transparent, secured, repeater, test, UART to Sigfox, radio to Sigfox.



Low Power: less than 1 uA in sleep mode.



Range: A link budget up to 161 dBm. This allows you to have a range (Line-Of-Sight) more than 15km !



Adapters: ATIM provides a complete range of shields and evaluation boards: Raspberry PI® interface, Arduino®-interface, « The Airboard® » shield, « LoRaBee shield », USB Key and Mini PCI Express

Technical features

<i>Dimensions</i>	70x53x13 mm
<i>Radio Regulation</i>	EN 300 220 V2.4.1
<i>Operating Temp</i>	-30°C to +70°C
<i>Modulation</i>	2GFSK/BPSK (Sigfox)
<i>Sensitivity</i>	-143dBm @BER10 ⁻³
<i>Range</i>	>25 km (LoS)
<i>Frequency</i>	863 – 870 MHz
<i>Output power</i>	25 mW (14 dBm)
<i>Data rate</i>	100 bit/s to 115,2 Kbit/s
<i>Antenna</i>	50 Ω via SMA/UFL
<i>Power supply</i>	3,3 Vdc
<i>Interface</i>	Arduino pinout (2x6 + 2x8)
<i>Setup</i>	AT commands via UART

Reference

- ACW-DUINO/868
- ACW-DUINO/SF8
- ACW-DUINO/SF8+
- ACW-DUINO/LR8



ATIM Radiocommunications







Chemin des Guillels
38250 Villard de Lans
France

www.atim.com
info@atim.com
+33 4 76 95 50 65



ATIM RF SHIELDS

Adapters for the ARM-NANO family

Name	ACW-RPI	SigBee® LoraBee®	ACW-MPCIE	ACW-DUINO	ACW-USB	ACW-SDK
Adapter Type	Raspberry Pi	XBee	Mini PCI-Express	Arduino	USB Dongle	USB
Supported RF Modules	ARM-Nano 868 MHz / Lora / Modbus / Sigfox					
Provided driver	Yes, Debian	No	No	Yes	Yes	Yes, FTDI Driver
Interfaces	UART	UART	UART	UART	USB	None
Antenna	External SMA	External SMA	External UFL	External SMA	External SMA	External SMA
Power	3.3 V	3.3 V	3.3 V	3.3 V	-	USB/5V/AA
Picture						
Dimensions (mm)	67x35x13	50x25x13	50x30x4	70x53x13	73x22x10	125x60x38

Try the Atim Cloud Wireless® A dedicated Web platform for the entire ATIM ACW line of products. Makers, Get Ready !



ATIM CONNECTS EVERYTHING
AND EVERYWHERE...



ATIM Radiocommunications
Chemin des Guillets
38250 Villard de Lans
France

www.atim.com
info@atim.com
+33 4 76 95 50 65

